

Fan type JK-50MTD

Technical data

Motor: IP 55

Supplied with the following motors:

| kW | amp. | Weight of motor kg | 50 Hz |
|------|------|--------------------|-------|
| 18,5 | 32,0 | 159 | 2960 |
| 22,0 | 38,0 | 204 | 2960 |

Max. min⁻¹:

Impeller: 3.000 min⁻¹

Operating range:

Air volume: 2,500 – 22,000 m³/h

Pressure: 160 – 590 mm WG

Power supply:

230/400 V.

Can be delivered as 440 V, 60 Hz

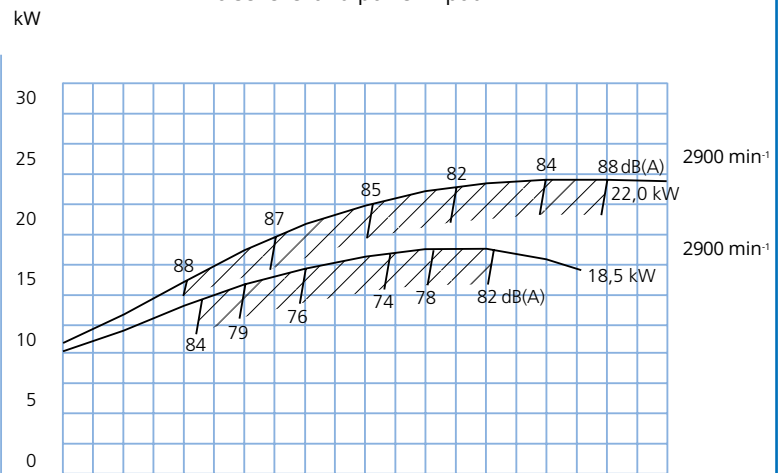
Construction:

Standard.

Impeller:

Standard.

Noise level and power input



Useful effect and pressure

